

Warm-up 2/9/17

Convert from DMS to decimal form.

1. $23^\circ 12'$

$$\frac{12}{60} = .2$$

$$23.2^\circ$$

2. $118^\circ 30' 15''$

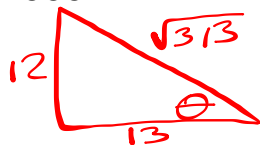
$$118^\circ 30.25'$$

$$118.504^\circ$$

$$\frac{15}{60} = .25$$

$$\frac{30.25}{60} =$$

Pg. 335 #14

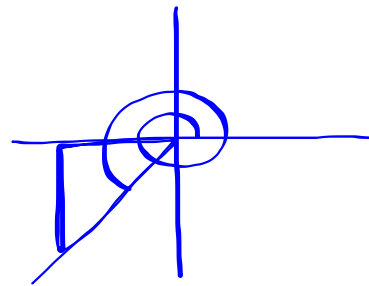


$$\sin \theta = \frac{12}{\sqrt{313}} \quad \csc \theta = \frac{\sqrt{313}}{12}$$

$$\cos \theta = \frac{13}{\sqrt{313}} \quad \sec \theta = \frac{\sqrt{313}}{13}$$

$$\tan \theta = \frac{12}{13} \quad \cot \theta = \frac{13}{12}$$

Pg. 347 #32

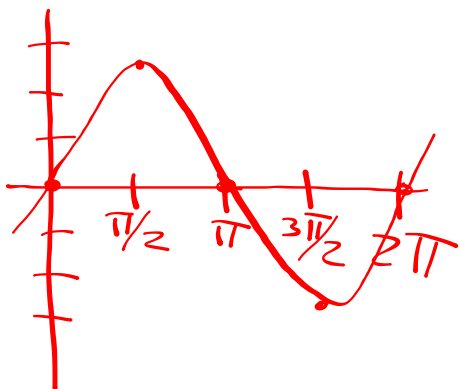


$$\left(0 + \frac{13\pi}{4} = 1\right)$$

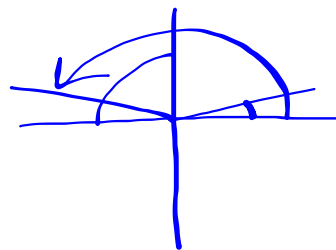
Pg. 357 #18

$$\text{amp.} = 2.5$$

$$\text{Per.} = \frac{2\pi}{1} = 2\pi$$



Pg. 366 #30



$$\sin x = \frac{1}{2}$$

$$x = \frac{5\pi}{6}$$

Pg. 385 #10

$$\tan^{-1}(-\sqrt{3}) = -\frac{\pi}{3}$$

