

Warm-up 2/7/17

Perform each transformation for this triangle, and give the coordinates of each image.

1. A translation right 5 units

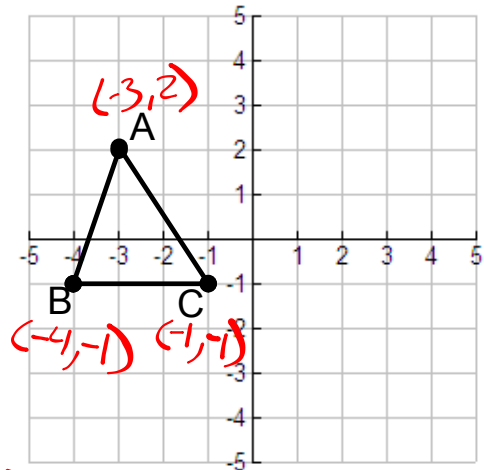
$$A'(2, 2) \quad B'(1, -1) \quad C'(4, -1)$$

2. A reflection over the x-axis

$$A'(-3, -2) \quad B'(-4, 1) \quad C'(-1, 1)$$

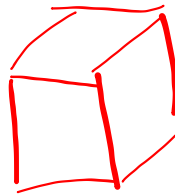
3. A rotation clockwise 90° about the origin

$$A'(2, 3) \quad B'(-1, 4) \quad C'(-1, 1)$$



Pg. 778-780

Pg. 782-783



Pg. 784-787

Pg. 788-790

Pg. 804

Volume of a Cylinder or Prism

$$V = Bh = \pi r^2 h$$

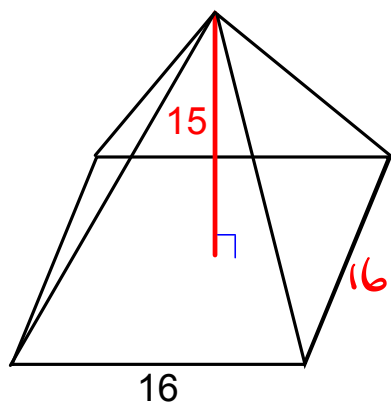
B : Area base
 h : height prism

$$V = \pi(8)^2(24) = 1536\pi \\ \approx 4825.5$$

Pg. 807-813

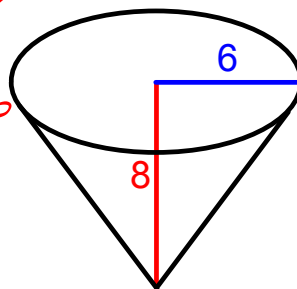
Volume of a Cone or Pyramid

$$V = \frac{1}{3} Bh$$



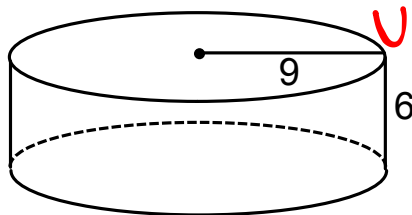
$$V = \frac{1}{3}(\pi(6^2))(8)$$

$$V \approx 301.6$$



$$V = \frac{1}{3}(16)^2(15)$$

$$V = 1280$$



$$V = (\pi(9^2))(6)$$

$$V \approx 1526.8$$