

Warm-up 4/6/17

Determine the perimeter and area of the triangle.

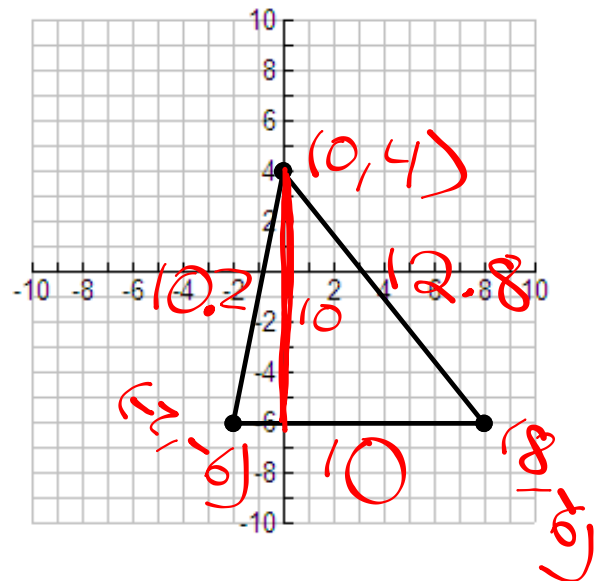
$$\sqrt{(-2-0)^2 + (-6-4)^2}$$

$$\sqrt{4+100}$$

$$\sqrt{104}$$

$$P = 10 + 10.2 + 12.8 = 33$$

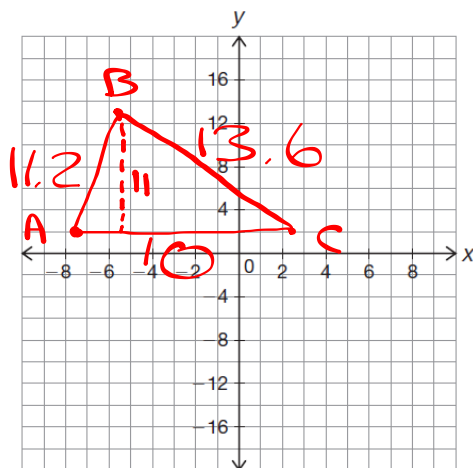
$$A = \frac{1}{2} (10)(10) = 50$$



Pg. 806-807

2

3

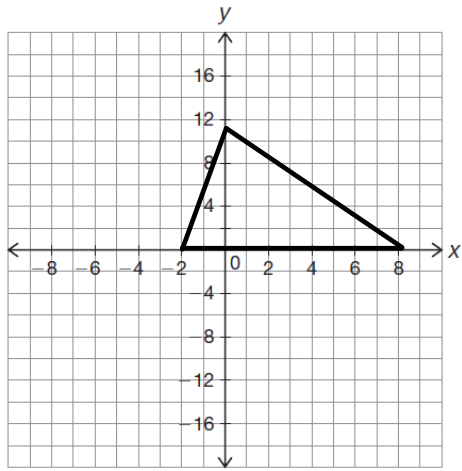


$$P = 34.8$$

$$A = \frac{1}{2} (10)(10) = 50$$

Pg. 808

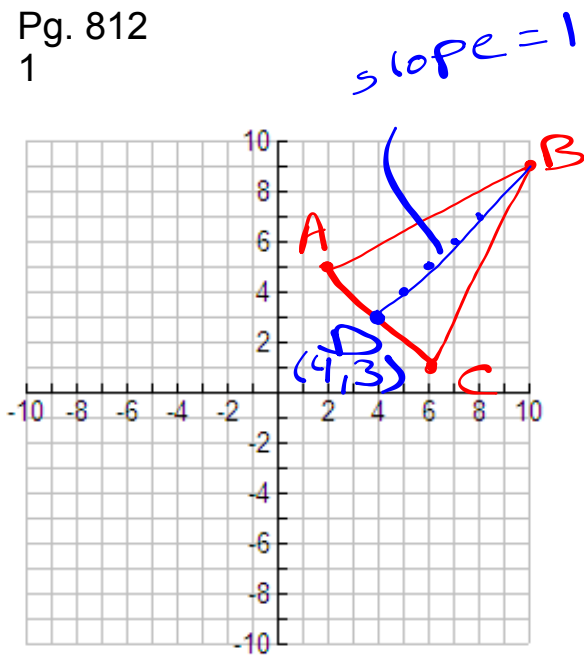
4



Pg. 810

Pg. 812

1



$$A = \frac{1}{2}(AC)(BD)$$

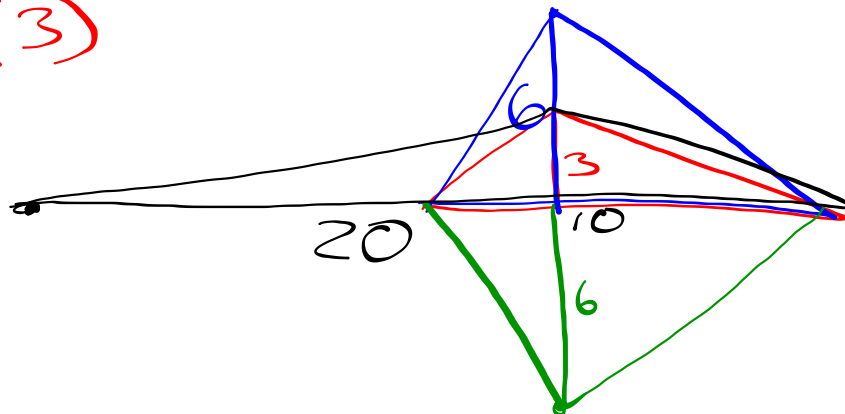
Pg. 817-818

1

2

$$\frac{1}{2}(10)(3)$$

15



Pg. 819-820