

Warm-up 4/4/17

A(5, 8), B(5, -1), C(10, -1), D(10, 8)

1. Is ABCD a rectangle?

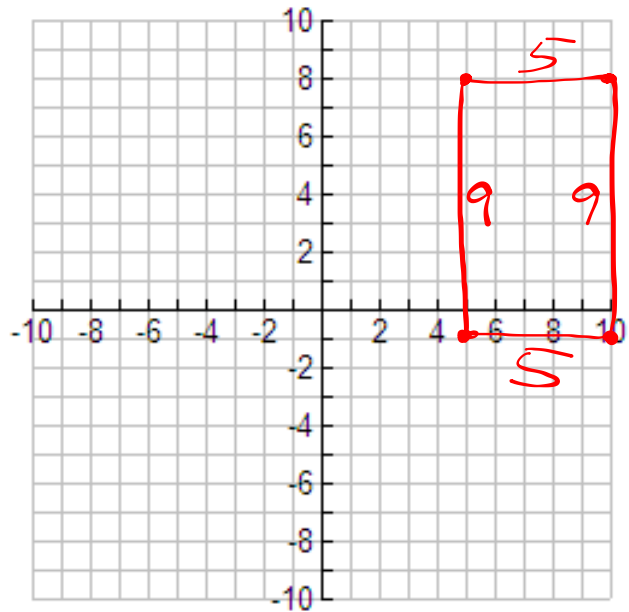
yes

2. What is the perimeter of ABCD?

$$9 + 9 + 5 + 5 = 28$$

3. What is the area of ABCD?

$$9(5) = 45$$



Pg. 796-797

1a

$$6 + 6 + 2 + 2 = 16$$

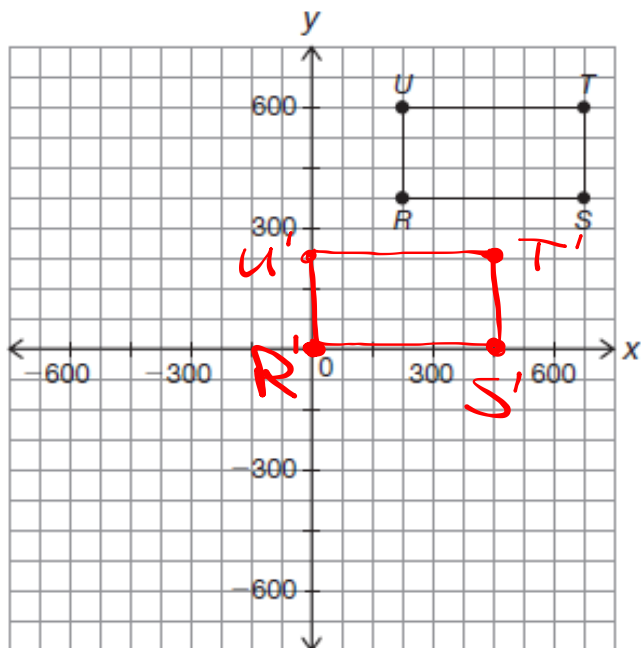
b

$$6(2) = 12$$

2

3a

Pg. 799



Left + 225
Down 375

$$R'(0,0)$$

$$U'(0,225)$$

$$S'(450,0)$$

$$T'(450,225)$$

Pg. 801-802

$$\sqrt{(1.2 - (-3))^2}$$

$$1.2 - (-3)$$

$$1.5$$