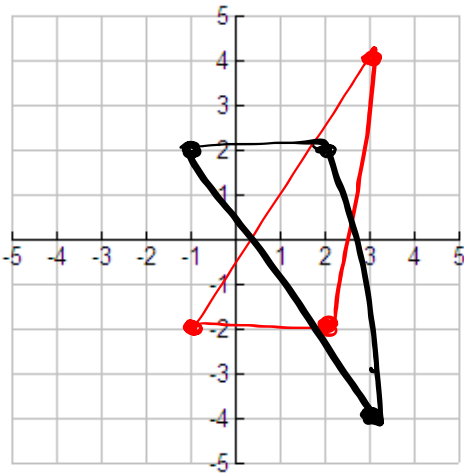


Warm-up 3/16/17

Reflect the triangle in the x-axis.

A(-1, 2), B(2, 2), C(3, -4)



$$A'(-1, -2)$$

$$B'(2, -2)$$

$$C'(3, 4)$$

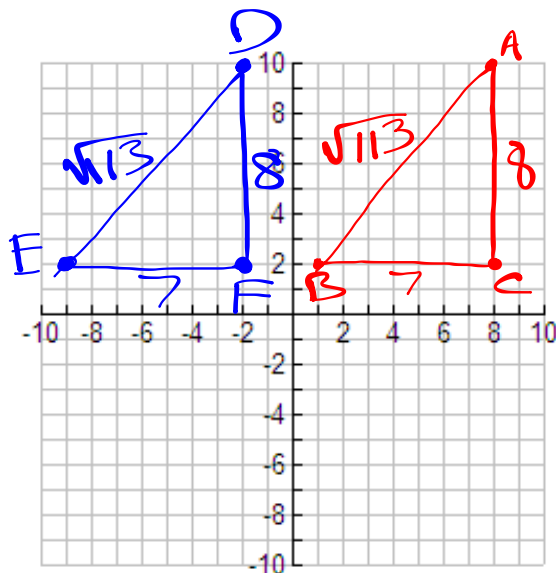
Pg. 744-745

$$\overline{AB} \cong \overline{CD}$$

$$AB = CD$$

$$\angle A \cong \angle B$$

$$m\angle A = m\angle B$$



$$7^2 + 8^2 = AB^2$$

$$113 = AB^2$$

Pg. 746-747

Pg. 748

1.  $\triangle JRB \cong \triangle MNS$ 

a.

$$\angle J \cong \angle M$$

$$\angle R \cong \angle N$$

$$\angle B \cong \angle S$$

b.

$$\overline{JR} \cong \overline{MN}$$

$$\overline{RB} \cong \overline{NS}$$

$$\overline{JB} \cong \overline{MS}$$

2.

$$\triangle T \cong \triangle P$$

$$\triangle TWC \cong \triangle PMK$$

Pg. 749

3.

a. reflection b.

across  
x-axis

c.

 $\triangle TGR \cong \triangle ZVQ$