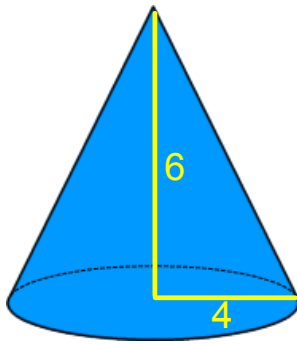


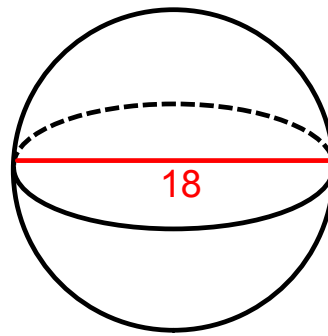
Warm-up 2/21/17

Find the volume of each shape.



$$V = \frac{1}{3} \pi (4)^2 (6)$$

$$V \approx 100.5$$



$$V = \frac{4}{3} \pi (9)^3$$

$$V \approx 3053.6$$

Pg. 822-823

1.

2.

$$3. \quad h=11 \quad h=8.5$$

$$r \approx 1.3528 \quad r \approx 1.7507$$

$$C = 2\pi r \quad h = 2\pi r$$

$$8.5 = 2\pi r \quad \frac{h}{2\pi} = r$$

$$\frac{8.5}{2\pi} = r$$

$$4. \quad V = \pi (1.3528)^2 (11)$$

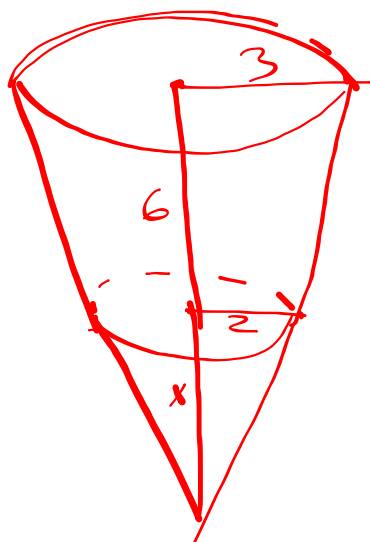
$$\approx 63.2$$

$$V = \pi (1.7507)^2 (8.5)$$

$$\approx 81.8$$

Pg. 824-825

1.



1.

